



Opzioni



MA - M



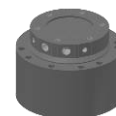
MA - F



GM - F



GV / B



BP



MA - SM



MA - SF



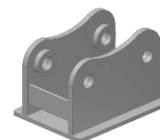
MA - FF



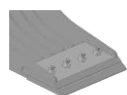
MA - MF



MA - MM



SELLA BP



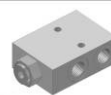
LAMA
IMBULLONATA



GANCI



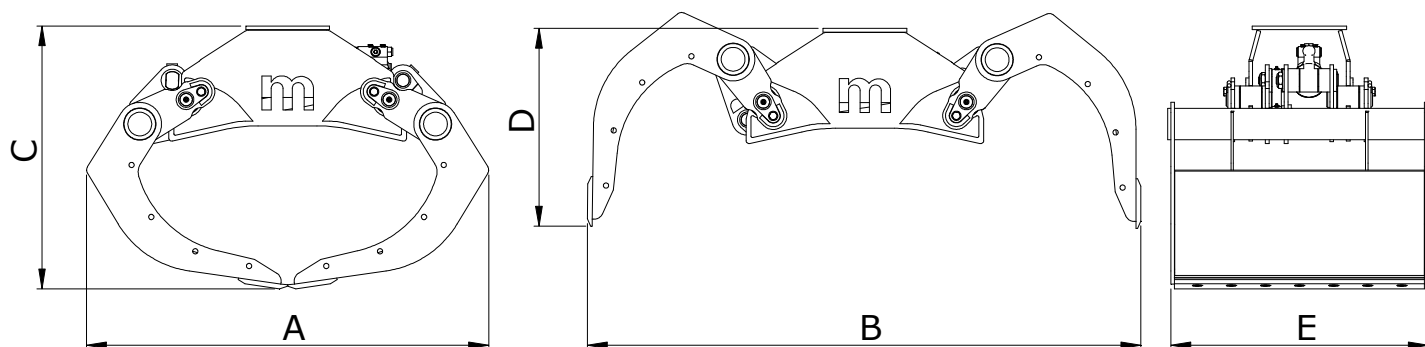
LAMIERA
CHIUSURA
FRONTALE





VALVOLA DI
BLOCCO

www.minellisrl.it – info@minellisrl.it

MBO - HD



	
MAX-BAR	L/min
300	70-60

MODELLO MODEL MODÈLE MODELL	CAPACITA CAPACITY CAPACITÉ INHALT	PESO WEIGHT POIDS GEWICHT		CILINDRI CYLINDERS CYLINDRES ZYLINDER	FORZA FORCE FORCE KRAFT	DIMENSIONI (mm) SIZES (mm) DIMENSIONS (mm) ABMESSUNGEN (mm)					MACCHINA MACHINE MACHINE MASCHINE
		LT	kg 			kg 	N°	N	A	B	
MBO 20 HD	200	310	350	1	22.000	1300	1790	850	640	600	16
MBO 25 HD	250	330	370	1	22.000	1300	1790	850	640	700	16
MBO 30 HD	300	360	400	1	22.000	1300	1790	850	640	850	16
MBO 35 HD	350	400	440	1	22.000	1300	1790	850	640	1000	16
MBO 40 HD	400	420	460	1	22.000	1300	1790	850	640	1200	16

-Dati e pesi sono indicativi: la ditta si riserva il diritto di apportare senza preavviso migliorie e modifiche necessarie per il buon funzionamento.

-Data and weight are indicative: the company reserve the right to make any improvements and changes required for good operation, without giving advance notice.

-Les données et les poids sont à titre indicatif: l'entreprise se réserve d'apporter sans préavis, les améliorations et les modification nécessaires au bon fonctionnement.

-Daten und Gewichte sind nur zur Orientierung gedacht: Die Firma behält sich das Recht vor, ohne Vorankündigung Verbesserungen und Änderungen vorzunehmen die zur einwandfreien Funktionsweise notwendig sein sollten.